

SABA PROPERTIES



Saba Properties
Bryanstons Mansions
York St
London
W1H 1DE

020 7224 8832
info@sabaproperties.com
www.sabaproperties.com



£14,000,000

House for sale on Wilton
Place, Belgravia, SW1

Reference: Belgravia01

Key Features

Air conditioned
Great location
Refurbished
Under floor heating throughout
All ensuite

The Property

A beautifully refurbished and meticulously designed five bedroom Georgian townhouse in this prime, sought-after Belgravia location. Situated at the Southern end of Wilton Place and enjoying the highly desirable outlook along Wilton Crescent, this is an elegant and prestigious family house.

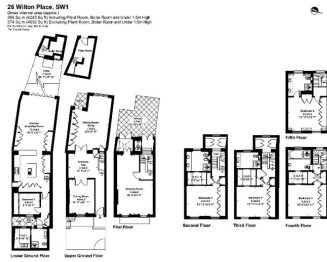
Particular features and benefits include the first floor drawing room which opens to a charming west-facing terrace and the superb open-plan kitchen / family room which again opens to a delightful patio on the lower ground floor. The property benefits from air-conditioning and underfloor heating throughout and has planning approved for a passenger lift (subject to approval from the Grosvenor Estate).

Located opposite the Berkeley Hotel, Wilton Place is ideally placed for all the world-class amenities Knightsbridge has to offer with easy access to Chelsea, Hyde Park and the West End.

Accommodation

5 Bedrooms : 5 Bathrooms : 3 Reception Rooms : Kitchen : Terraces : Plant Room : Utility Room

Gallery



Saba Properties