

SABA PROPERTIES



Saba Properties
Bryanstons Mansions
York St
London
W1H 1DE

020 7224 8832
info@sabaproperties.com
www.sabaproperties.com



£975 per week Other terms &

fees apply

**Flat to rent on Latitude
House, Camden**

Reference: Latitude01

Key Features

Two Bedroom
Two Bathroom
Terrace
Refeurbished

The Property

AWARD WINNING two bedroom apartments remains a classic contemporary architecture of London that looks fresh. The limestone and glass of the exterior carries through into the apartments, each apartment finished with the highest quality natural materials. The graining of walnut timber has been used to catch the natural light coming through the floor to ceiling windows allowing plenty of natural light enter the beautiful apartments of Latitude House leaving a warm and modern feel to the interiors. Kitchens are finished with white lacquered units with integrated appliances generating a bright and practical place. Limestone bathroom floors and walls in elegant frosted white glass with backlit mirrors. Private outdoor space and scenery front and rear courtyards intensify the lower apartments. Latitude house is located neighbouring Regents Park, with Camden Town close by.

Saba Properties

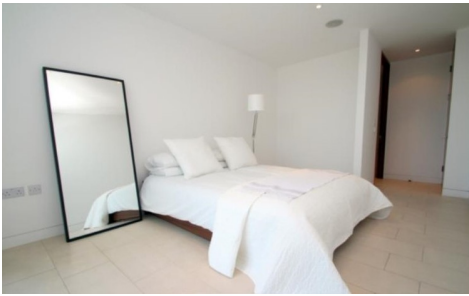
Gallery



Latitude House, NW1 7EU



APPROX GROSS INTERNAL FLOOR AREA: 1162.50 SQ FT - 108.00 SQ M
APPROX GROSS INTERNAL FLOOR AREA INC. BALCONY AREA: 1222.88 SQ FT - 113.61 SQ M



Saba Properties