



Sold

Guide Price of
£24,000,000

7 bed House for sale on
Addison Road W14

Reference: Addison01

Key Features

Private Gated
Security cameras
Gym
Swimming Pool
Sauna
Cinema
Lift

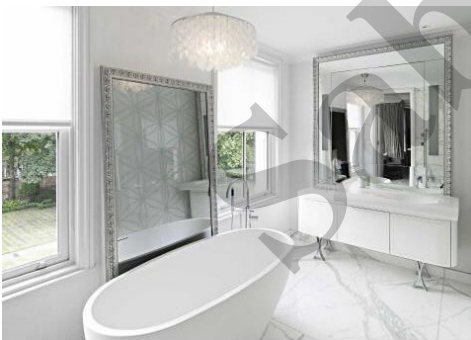
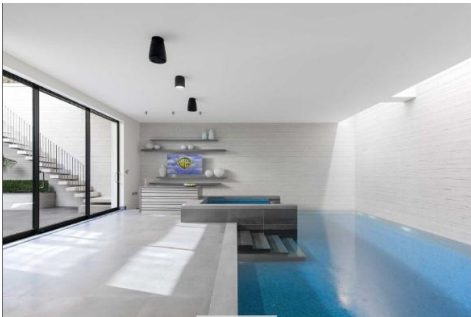
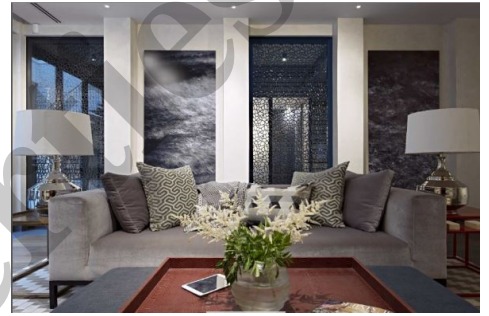
Individual His and Hers powder room

The Property

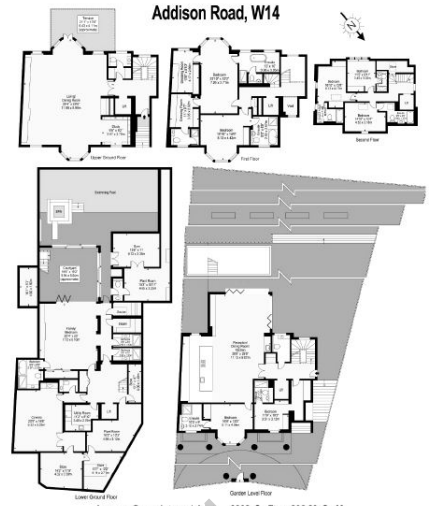
Saba Properties is proud to offer this exceptional freehold detached residence has been reconstructed behind the Victorian facade to the highest of standards and interior designed with great imagination by the award winning SHH architects to create a stunning and contemporary 9,000 sq ft home with extensive entertaining rooms and leisure facilities. The delightful garden and terraces have been designed by Kate Gould the RHS Chelsea Flower Show gold medallist. The carriage driveway provides parking for 2-3 cars, the passenger lift accesses all floors and the indoor swimming pool extends to over 12m. Addison Road is one of Holland Park's most prestigious streets with the glorious open spaces of Holland Park being within walking distance. Added to which access to the outstanding shops, restaurants and transport facilities in and around Kensington, Holland Park and Notting Hill is extremely easy, as well as access to some of the areas top schools, Thomas's, Wetherby, Pembridge Hall and Norland Place to name a few.

Saba Properties

Gallery



Addison Road, W14



Lower Ground Floor Ground Level Floor
Approx. Gross Internal Area 9002 Sq Ft - 836.29 Sq M
For Illustration Purposes Only - Not To Scale



Saba Properties