

SABA PROPERTIES



Saba Properties
Bryanstons Mansions
York St
London
W1H 1DE

020 7224 8832
info@sabaproperties.com
www.sabaproperties.com



£1,150 per week Other terms

& fees apply

**3 bed Flat to rent on
Panoramic, Grosvenor
Road, SW1**

Reference: Panoramic1

The Property

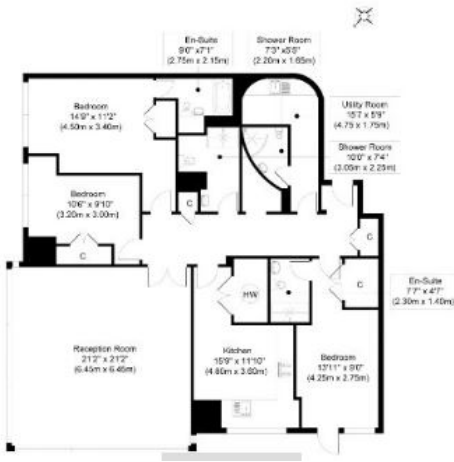
A bright and spacious three bedroom apartment situated on the 12th floor of this riverside development. The property benefits from stunning views across the River Thames, wooden floors throughout and floor to ceiling windows in the reception room. The Panoramic also has a residents gym and underground parking as well as a concierge service and 24 hour portorage.

Saba Properties

Gallery



Grosvenor Road, SW1V
TOTAL APPROX FLOORPLAN AREA 1690 SQ.FT (157.06 SQ.M)
Twelfth Floor



Saba Properties