



**£5,000 per week** Other terms

& fees apply

**3 bed Flat to rent on Court  
House, Horseferry Road,  
Westminster SW1**

Reference: Crths03

## Key Features

24 hr security  
concierge  
2 x Secure Parking Spaces  
air conditioning  
gym  
terrace

# The Property

This spectacular penthouse comprises of an elegant hallway which leads onto a spacious reception and dining room with stunning views across over Big Ben, Houses of Parliament and London Eye.

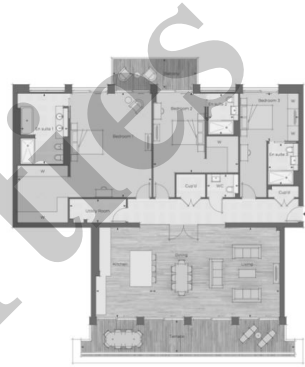
The property includes a separate kitchen finished immaculately with all modern fittings, integrated appliances, plus three double bedrooms each with en-suite shower rooms and the master bedroom has a bath and shower. There is also a guest cloakroom. The property further boasts iPad controlled air and lighting system, gym facilities on site, large roof terrace and good storage. Residents benefit from an array of amenities including a 24 hour concierge, a fully equipped fitness suite and access to an attractive landscaped courtyard garden with water feature.

The Courthouse is fortunate to be in a superb location, being only 10 minutes from St James' Park, Victoria and Westminster transport links, as well as only a short walk many local amenities including shops and restaurants.

The Courthouse also benefits from a close proximity to attractions such as Westminster Abbey, Big Ben, the Tate Gallery and universities such as UCL and King's College.

Saba Properties

# Gallery



Saba Properties

# Floorplan

