

SABA PROPERTIES



Saba Properties
Bryanstons Mansions
York St
London
W1H 1DE

020 7224 8832
info@sabaproperties.com
www.sabaproperties.com



£900 per week Other terms &

fees apply

**3 bed Flat to rent on
Cavendish House, Monk St
SW1**

Reference: CAVENDISH01

Key Features

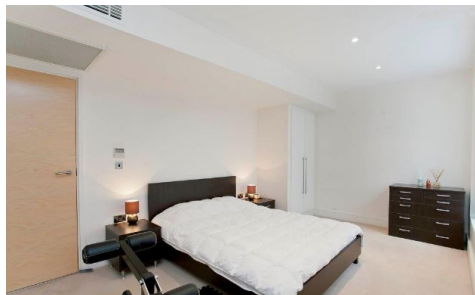
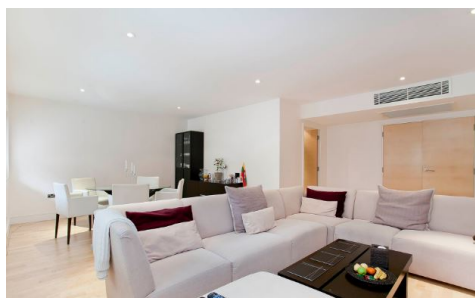
24 hr security
Porter
secure parking

The Property

A well proportioned partly furnished 3 double bedroom, 2 bathroom (1 en-suite) apartment on the 1st floor of this popular modern development. Benefits include a separate kitchen, comfort-cooling, wood flooring, secure underground parking and a 24 hour porter. New Palace Place is within walking distance to the transport links of St James's Park, Westminster and Victoria and the surrounding area offers a variety of retail stores, including the flagship House of Fraser Department store, the Cardinal Place Shopping Centre as well as an abundance of amenities including a Tesco Local, a Little Waitrose, a Curzon Cinema and many new restaurants, namely, Jamie Oliver's Italian, Iberica, Browns, La Tasca, Zizzi and Wagamama to name but a few. Shepherds, The Quilon and Cinnamon Club compliment the extensive range of existing restaurants. Please note the property is currently unfurnished but the owner will consider furnishing it.

Saba Properties

Gallery



Saba Properties

Floorplan

Cavendish House

Approximate Gross Internal Area = 1385 sq ft / 128.6 sq m



Image 9/9