



£1,150 per week Other terms

& fees apply

**2 bed Flat to rent on The
Phoenix, Bird Street, W1**

Reference: Phoenix01

Key Features

Newly Furnished
Porter
Great transport links
Lift

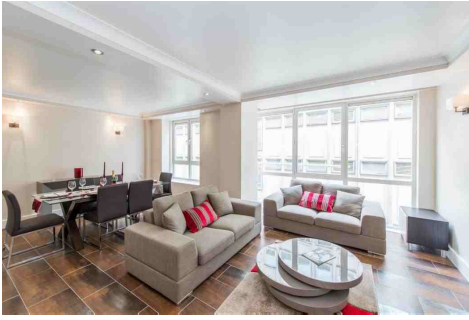
The Property

Situated within a popular purpose built development moments from Oxford Street and Selfridges, is this fantastic BRAND NEW refurbished two bedroom, two bathroom apartment situated on the second floor (with lift)

This has got to be the best two bed apartment in this block.

Saba Properties

Gallery



Saba Properties