

SABA PROPERTIES



Saba Properties
Bryanstons Mansions
York St
London
W1H 1DE

020 7224 8832
info@sabaproperties.com
www.sabaproperties.com



£900 per week Other terms &

fees apply

**2 bed Flat to rent on
Paddington Exchange,
London, W2**

Reference: PaddExchange01

Key Features

24 HR Concierge
Parking
Luxury bathroom
Transport links
Lift

The Property

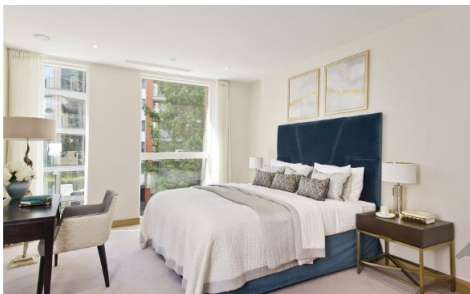
Brand new luxurious development

We are pleased to present Paddington Exchange, a brand new development located in the heart of Paddington, a vibrant, busy and well-connected quarter of London. A short distance away from London's famous West End including Oxford Street, Marylebone and Kensington. Zone 1 location Easy access to an extensive transport network including: London Underground Heathrow Express National Rail and the forthcoming Crossrail.

Please enquire further regarding 1,2 and 3 bed options

Saba Properties

Gallery



Saba Properties