

# SABA PROPERTIES



Saba Properties  
Bryanstons Mansions  
York St  
London  
W1H 1DE

020 7224 8832  
info@sabaproperties.com  
www.sabaproperties.com



**£650 per week** Other terms &

fees apply

**2 bed Flat to rent on  
Marshall Building 3-5  
Hermitage St W2**

Reference: Marshall01

## Key Features

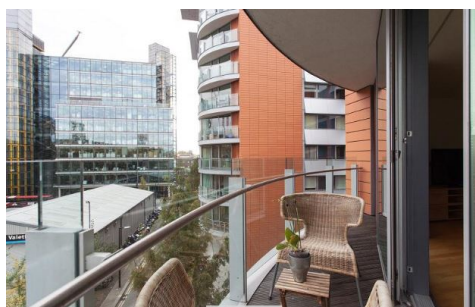
- 24 hr security
- 24 hr concierge
- underground parking
- balcony
- communal garden

# The Property

Saba Properties are pleased to offer this bright, well maintained and proportioned fourth floor (with lift) flat located in this modern development in the heart of Paddington basin. The flat boasts a bright reception room with access onto a balcony, two double sized bedrooms including an ensuite bathroom to the master bedroom. This modern apartment is close to a wealth of transport links including Paddington Station (Heathrow Express). Lancaster Gate (central line) and the Edgware Road tube stations are also nearby. Hyde Park and Oxford Street is within easy reach as are fashionable shopping districts such as Westbourne Grove and Marylebone High Street

Saba Properties

# Gallery



Saba Properties