



**£1,150 per week** Other terms

& fees apply

**2 bed Flat to rent on The  
Phoenix, Bird Street, W1**

Reference: Phoenix01

## Key Features

Newly Furnished  
Porter  
Great transport links  
Lift

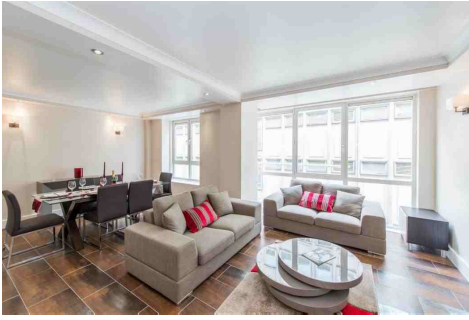
# The Property

Situated within a popular purpose built development moments from Oxford Street and Selfridges, is this fantastic BRAND NEW refurbished two bedroom, two bathroom apartment situated on the second floor (with lift)

This has got to be the best two bed apartment in this block.

Saba Properties

# Gallery



Saba Properties